

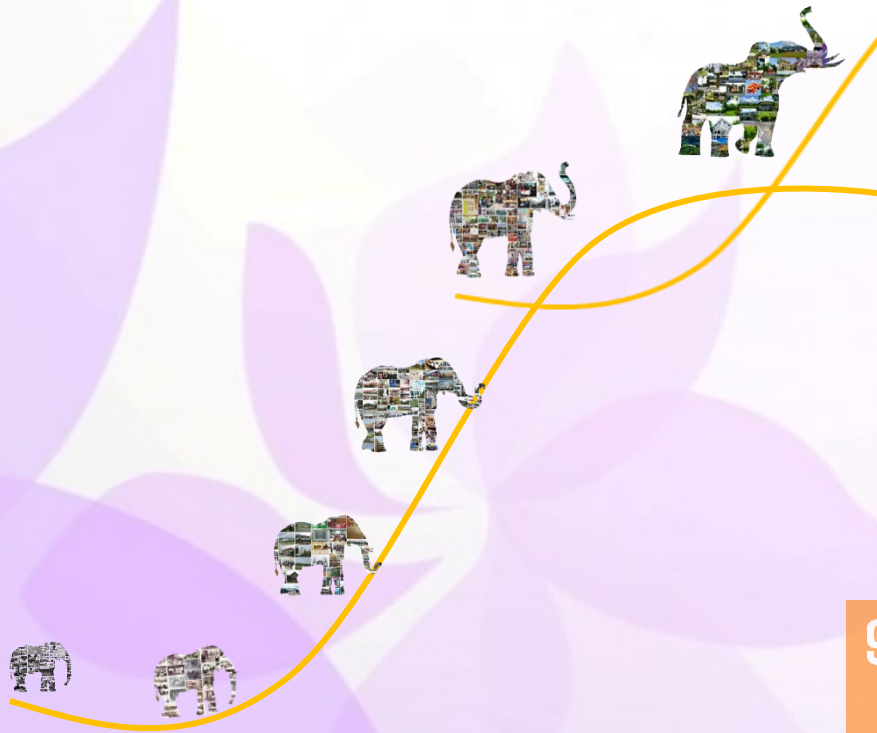
Good University Report 2020

Chiang Mai University



A leading university committed to social responsibility and sustainable development

CMU Transformation



17 PARTNERSHIPS FOR THE GOALS

A white icon consisting of three overlapping circles, representing partnerships for the goals.

9 INDUSTRY, INNOVATION AND INFRASTRUCTURE

A white icon of three stacked cubes, representing industry, innovation, and infrastructure.

13 CLIMATE ACTION

A white icon of a globe with an eye shape, representing climate action.

11 SUSTAINABLE CITIES AND COMMUNITIES

A white icon of several buildings, representing sustainable cities and communities.

7 AFFORDABLE AND CLEAN ENERGY

A white icon of a sun with rays, representing affordable and clean energy.

4 QUALITY EDUCATION

A white icon of an open book and a pencil, representing quality education.

3 GOOD HEALTH AND WELL-BEING

A white icon of a heart with a pulse line, representing good health and well-being.

2 ZERO HUNGER

A white icon of a bowl with steam rising from it, representing zero hunger.

1 NO POVERTY

A white icon of a family of four people, representing no poverty.

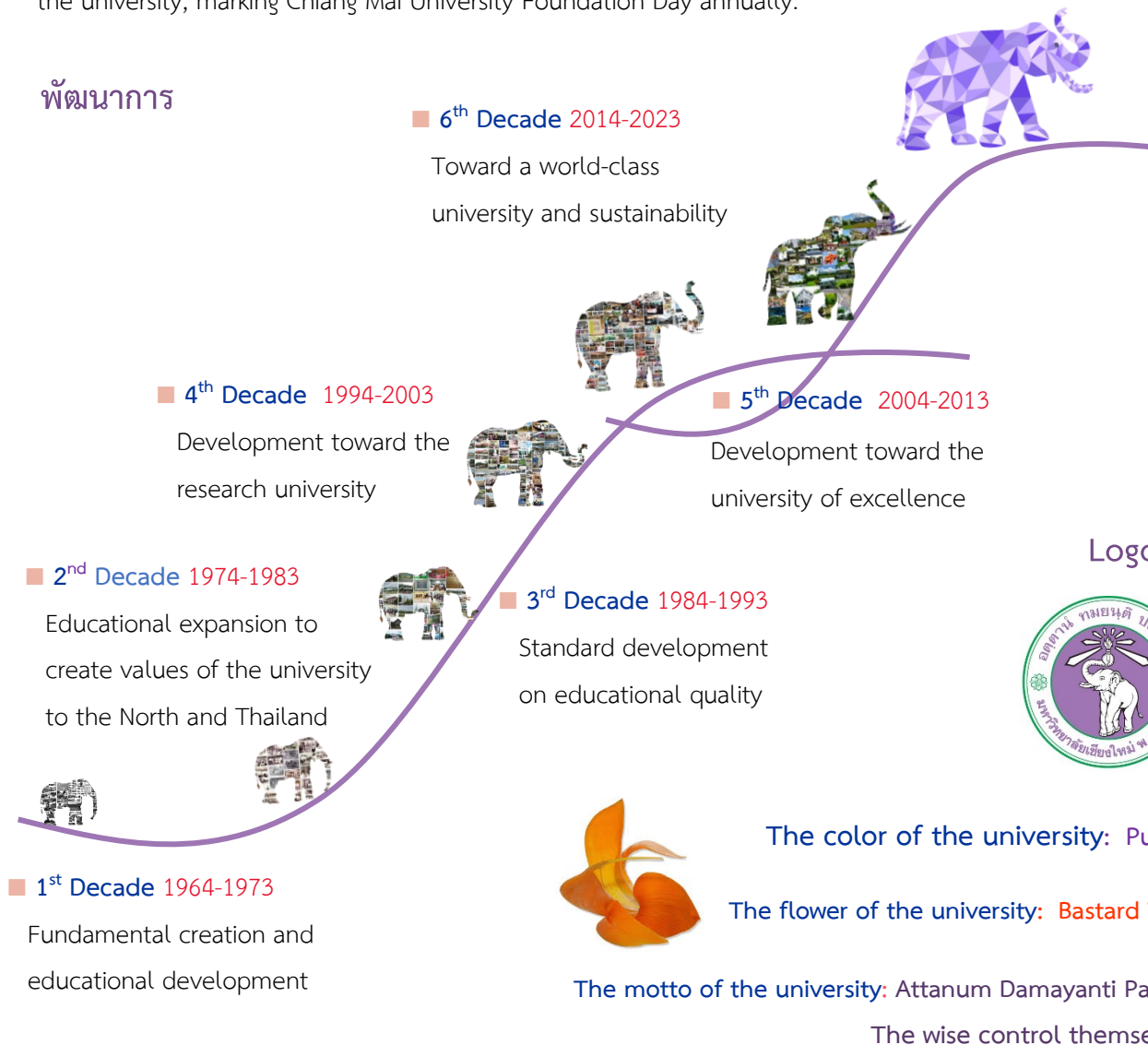
General Information about Chiang Mai University

History

Chiang Mai University is the first regional university of Thailand in accordance with the call of the northern people. It was founded by the Chiang Mai University Act on 22 January 1964, regarded as the university's official establishment day. On 24 January 1965, His Majesty King Bhumibol Adulyadej graciously presided over the opening ceremony of the university, marking Chiang Mai University Foundation Day annually.



พัฒนาการ



Logo

The color of the university: Purple

The flower of the university: Bastard Teak



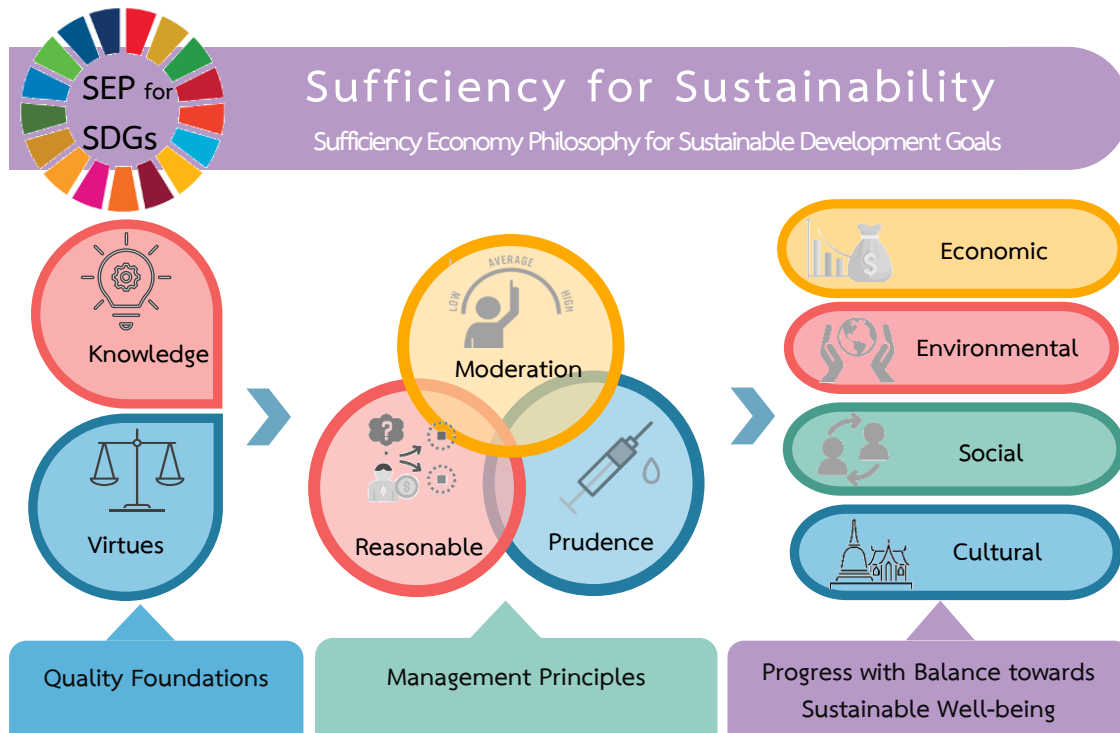
The motto of the university: Attanum Damayanti Pandita
The wise control themselves.

Location and Area Size: The university covers a large area and is located amidst the natural abundance, with a total area of **3,518.18 Acres**.

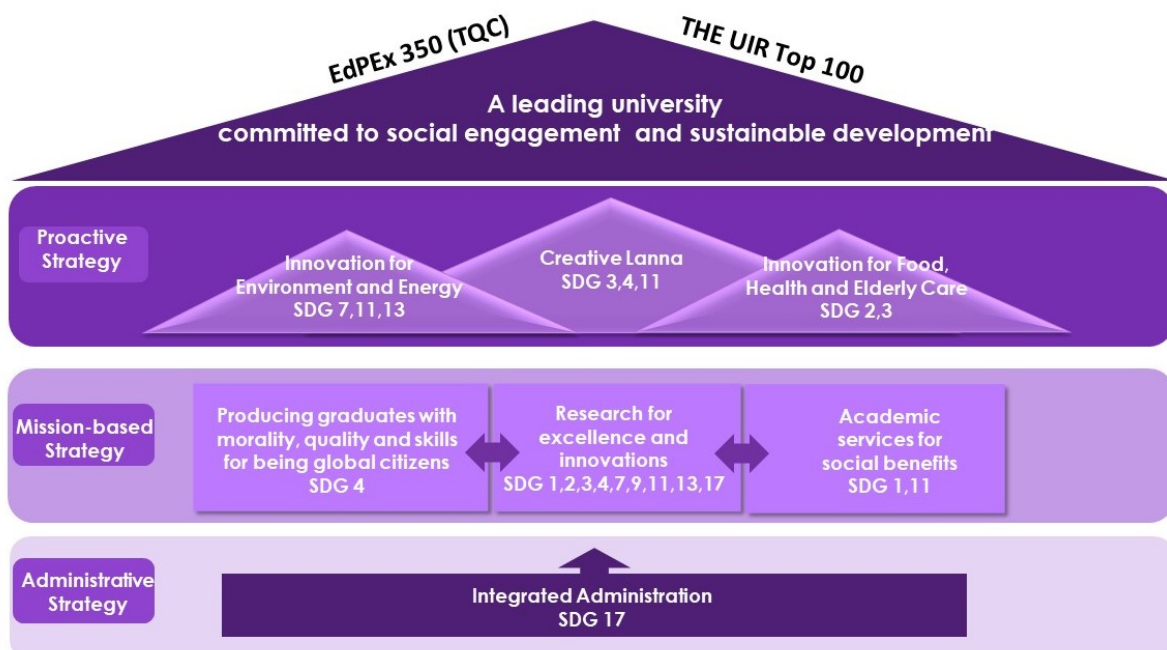
727.6 Acres	511.06 Acres	1,868.37 Acres	1.97 Acres	409.09 Acres
Main campus located around Suthep Mountain and Suan Dok Area, Chiang Mai	Education Area, Mae Hia, Chiang Mai	Education Area, Hariphunchai, Lamphun	Education Area, Samut Sakhon	Others

University Administration toward Sustainable Development

Based on its vision toward becoming a world-class university with social accountability and sustainable development, Chiang Mai University has implemented the CMU Education Development Plan No.12 (2017-2021) to move forward Sustainable Development Goals (SDGs) by driving the Sufficiency Economy Philosophy (SEP) through BCG (Bio Economy, Circular Economy, and Green Economy) or “SEP for SDGs by CMU BCG Platform.”



By Mr. Don Pramudwinai, Deputy Prime Minister and Minister of Foreign Affairs (2016)



The Links between Missions and Strategies of the University and SDGs

SUSTAINABLE DEVELOPMENT GOALS



Proactive Strategy

Innovation for Environment and Energy

SDGs7 SDGs11 SDGs13

- Smart Energy
- Smart Community
- Smart Environment
- Smart Mobility

Creative Lanna

SDGs3 SDGs4 SDGs11

- Art and Heritage
- Creative and Cultural
- Economy
- Tourism

Innovation for Food, Health and Elderly Care

SDGs2 SDGs3

- Aging
- Food
- Medical Hub

Mission-based Strategy

Producing graduates with morality, quality and skills for being global citizens

SDGs4

Academic Services for Social Benefits

SDGs1 SDGs11

Research for Excellence and Innovations

SDGs1 SDGs2 SDGs3 SDGs4 SDGs7
SDGs9 SDGs11 SDGs13 SDGs17

Administrative Strategy

Integrated Administration

SDGs17

Vision



A Leading University Committed to Social Responsibility and Sustainable Development

Commitment



Chiang Mai University is the first regional university, based on the government's policy and objectives of the northern people, as a center for academics and high professions to benefit the locality and the country as a whole.

This university is a place for knowledge collection, studies, research, and knowledge transfer in accordance with academic freedom based upon morality and academic excellence, application, dissemination, and arts and culture restoration.

All graduates of Chiang Mai University will concentrate on self-training to become knowledgeable, thoughtful, and practical persons as well as being able to manage themselves and other people, and work with ethics and social awareness.

Mission



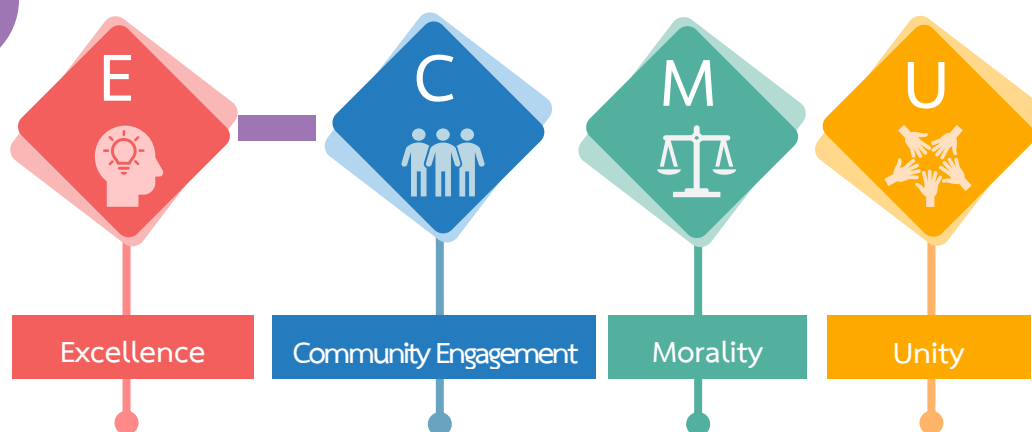
1. Provide education and training to the students.
2. Collect and apply the body of knowledge (Research-Innovation).
3. Provide academic services as gratitude to the motherland.
4. Preserve and nurture Lanna-Thai cultural heritage and natural environment (a supportive mission through an integrated operation with other missions).

Organizational Culture



Hand-in-hand basis

Values



Excellence

- Focusing on the quality of excellence
- Focusing on work efficiency
- Focusing on flexibility
- Learning organization

Community Engagement

- Creating a sense of love and bond with the organization
- Focusing on the locality and having social accountability

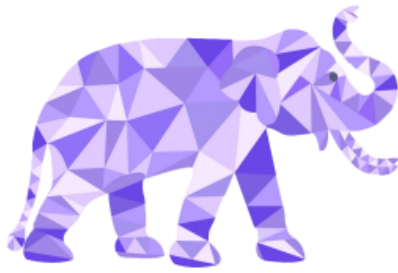
Morality

- Having good governance
- Promoting morality
- Developing a volunteering spirit/service

Unity

- Working as a team

Administration Guidelines for CMU Accomplishments



CMU Transformation



CMU-EdPEX

Adopting the EdPEX as the guidelines for administration to encourage all sectors of the university to exercise their potential in the same direction.



CMU-Transformation

To move forward the Digital University based on the implementation of Digital Transformation, an educational digital platform has been developed to support the study, research, administration, and academic services for the society and communities through technologies.



Teaching and Learning Innovation

Center : (TLIC)

To develop the quality of teaching and studying through innovation consistently, an educational digital platform that supports such teaching and studying has also been created.



CMU School of Lifelong Education

Focusing on the educational development of people of all ages that supports the accumulation in the form of a credit bank to be further transferred to the degrees.



SDGs 3: GOOD HEALTH AND WELL BEING

It is acclaimed as Number 1 of ASEAN and Number 49 of the World concerning the promotion of good health and well-being by Time Higher Education University Impact Ranking (THE UIR).



Big Data for Academic Services and Administration

Data of air quality and haze, Participatory Onehealth Disease Detection (PODD), water management system, administration system for a smart city all enable the development of databases, platforms, and tools for effective management.



Digital University

Developing the Jumbo Net, expanding 5,600 WIFI spots, developing the Research Data Service (RDS@CMU), to support electronic-based work in order to enhance work capacity, increase convenience, and reduce the limitation of time and place or storage that facilitates a new working system and budget saving.



Subsidiary Company of Angkaew Holding Co.,Ltd.

For further development of knowledge toward innovations for commercial purposes.



Sandbox Organization

Adjusting the organizational structure of some agencies within the University Office in the form of the pilot sandbox model, having the structure of flat organization for flexible management and repetition reduction in utilizing resources.

Outstanding & Awarded Innovations and Research



- The Tony Whitten Conservation Prize for Analysis of Biodiversity and Evolutionary Relationships of Land Snails in Thailand and South East Asia, including the Development of Basic Programs for Land Snail Conservation
- The Gold Medal Award for Nano-based Pain Relief and Anti-inflammatory Cream from Chili and Thai Plant Extracts
- The Gold Medal Award and Special Prize for Chewable Collagen Products
- The Outstanding Research Award for Mobile UVC Virus Killer “V-Free By Maneejun”
- The Innovation Award for Non-thermal Plasma-activated Water Machine for Inactivation of Food-borne Pathogens in Food Industry
- The Innovation Award for Air Quality Assessment System
- The Outstanding Award for Research on Heart Rate Variability and Its Association with Iron Overload in Thalassemic Heart
- The Best Newbie Award for Autonomous Aerial Vehicle Challenge
- The Alan Glanvill Award for High Flexible Sensor Development



- Medical Cannabis Extraction Prototype and Cosmeceuticals from Cannabis Extracts
- Haze Elimination Mobile that turns waste into clean energy
- Innovative MasquraX for Wildfire Suppression and Medical Purposes
- Discovery of the World’s New Mushroom “*Apsorn Mushroom*”
- Thailand’s First Compact Ion Implanter for Improving Rice Varieties
- Innovative Food Fabrication Pilot Plant
- Real-time Smart Parking Sensor



Roles in Promoting Educational, Economic and Social Equality

Educational Opportunity Expansion

Chiang Mai University has continuously accepted students enrolled in various special projects to expand educational opportunities and reduce educational inequality while promoting those gifted students to enhance their own potential in order to apply the knowledge for creative work in each different field to benefit the country's development. These projects are listed below.

Collaborative Project to Increase Rural Doctors	Higher Education for Well-behaved Students	Higher Education for Poor Students
Hilltribe Students	Youth Excellence in Sports	Social Thinkers
<i>Kru Rak Tin</i> Project	Women in Engineering	Mae Chaem and Omkoi Development
Promotion for Students with Disadvantages, Disabilities and Talents	Thai Muslim Students in 5 Southernmost Provinces	Higher Education for Junior Farmers and National Farmers



Impacts of the University's Operations on the Society and Economy

The CMU operations under the Educational Development Plan Strategy Phase 12 (2017-2022) have positively brought economic and social impacts to the province of Chiang Mai and the northern economy or Social Return of Investment (SROI) during the fiscal year 2018-202 in a total of **12,296** million (see baht below)



Innovation for Environment and Energy
Total **3,103** million baht



Innovation for Food, Health and Elderly Care
Total **1,374** million baht



Creative Lanna
Total **102** million baht



Producing graduates with morality, quality and skills for being global citizens
Total **361** million baht



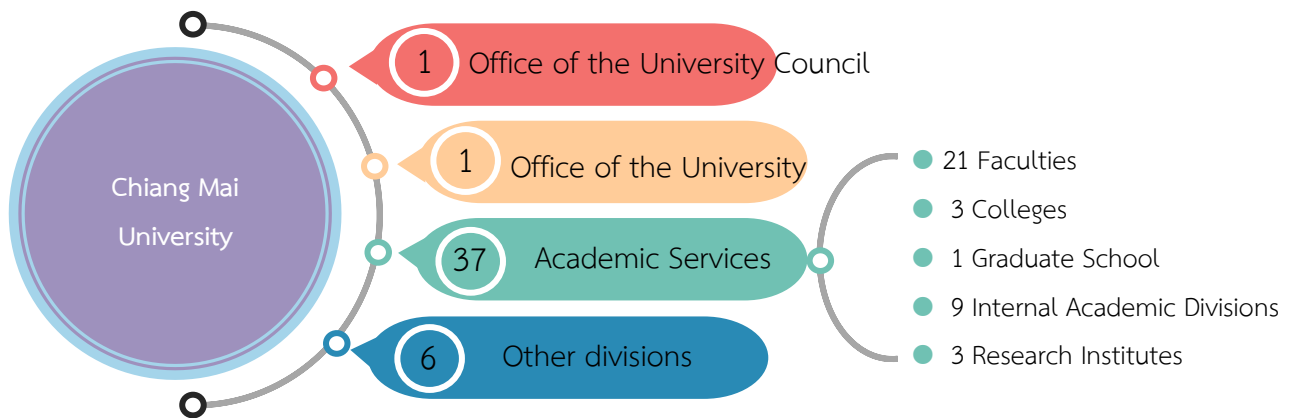
Research for Excellence and Innovation
Total **1,681** million baht



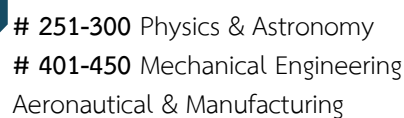
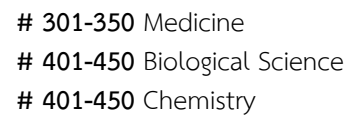
Academic Service for Social Benefits
Total **5,675** million baht

Good University Report 2020, Chiang Mai University

Organizational Structure



University Rankings



THAILAND



ASEAN



ASIA

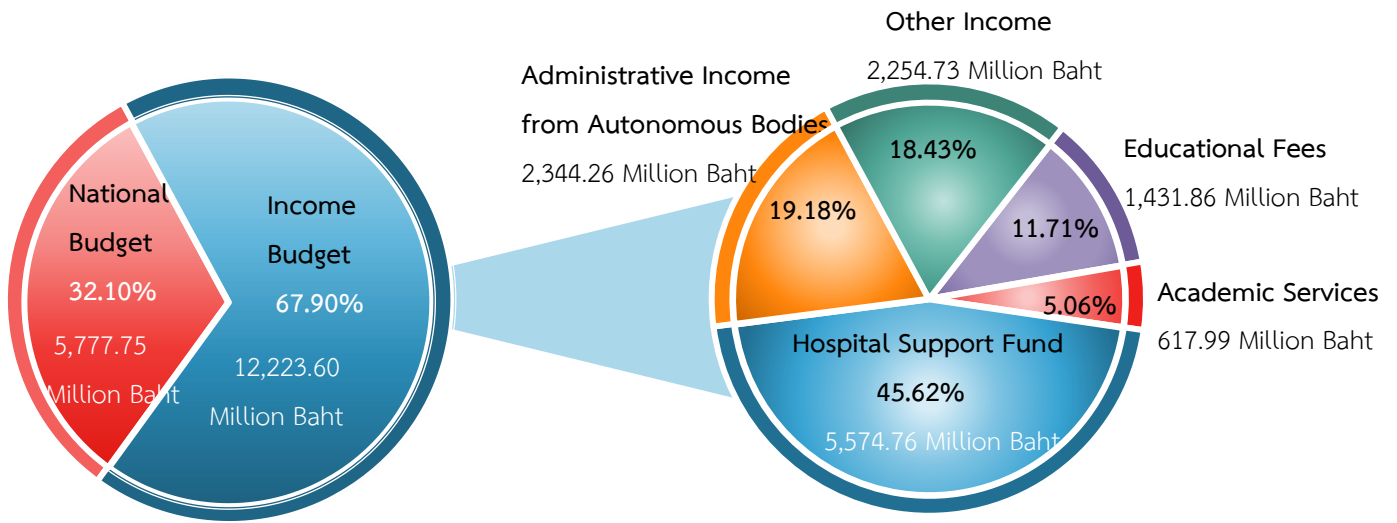


WORLD

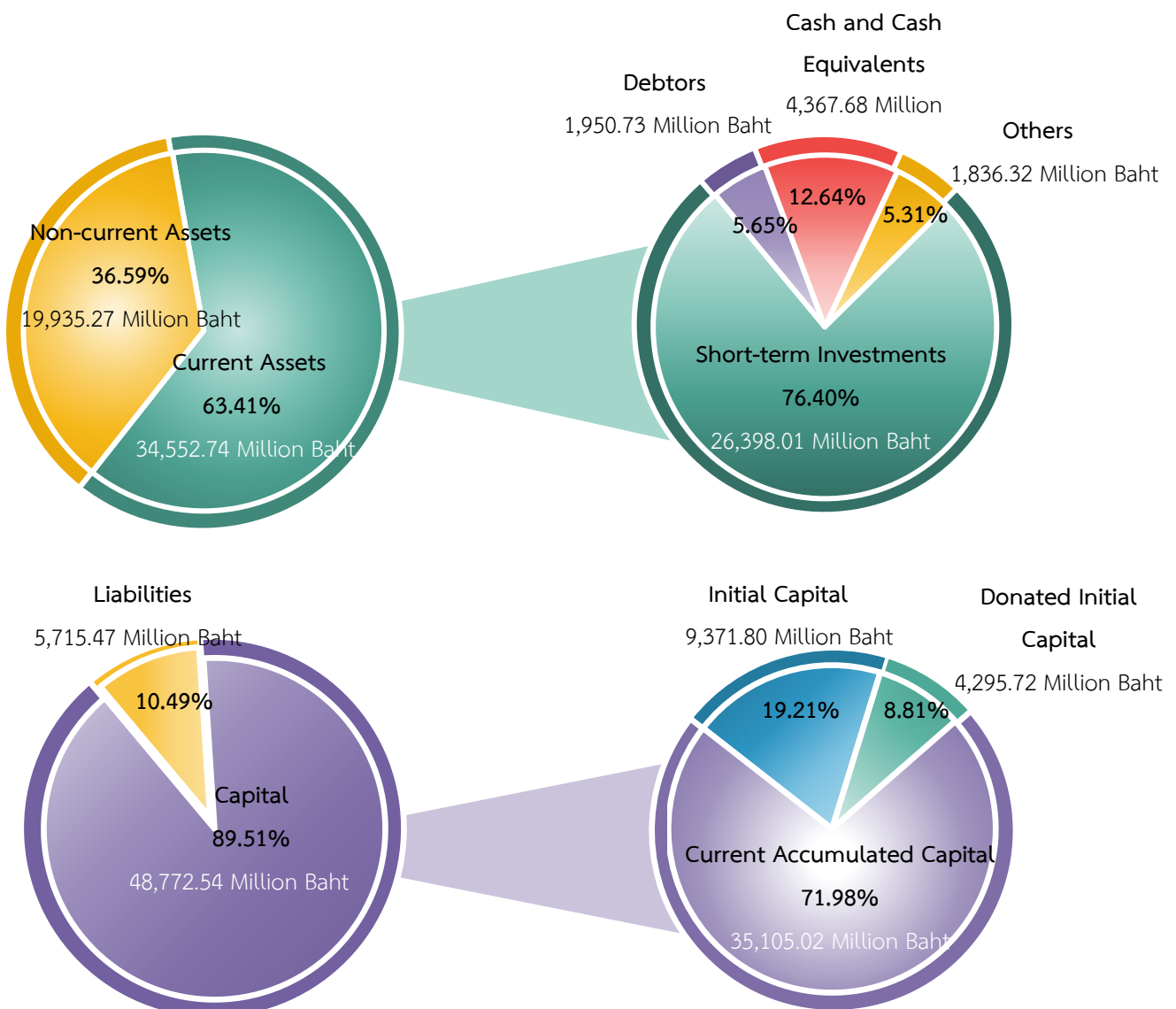


2020

Revenue for the Fiscal Year 2020 Total 18,001.35 Million Baht



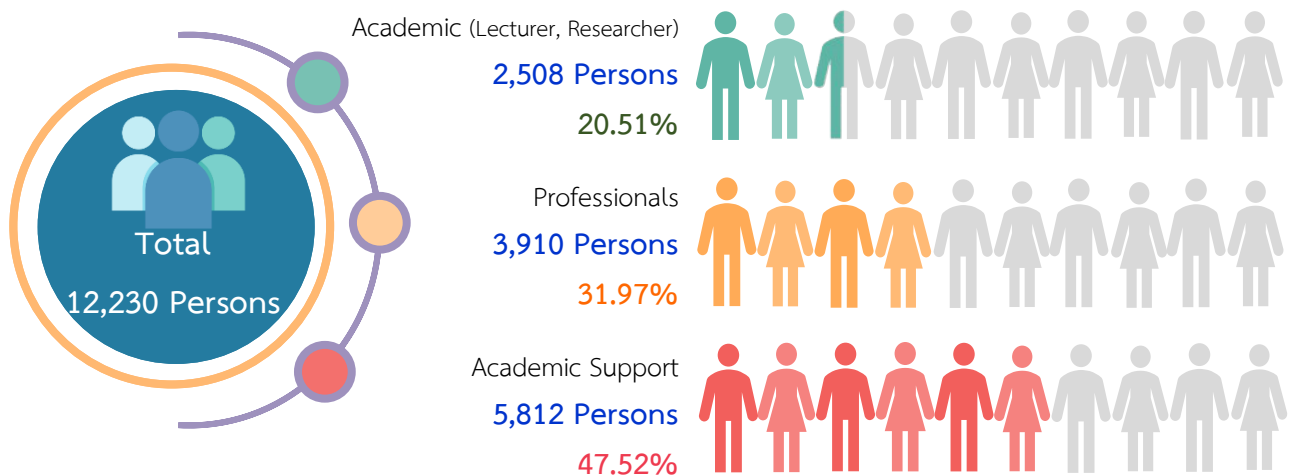
Assets, Liabilities, Capital (by September 2020) Total 54,488.01 Million Baht



Source: Finance Division, Chiang Mai University (October 2019-September 2020)

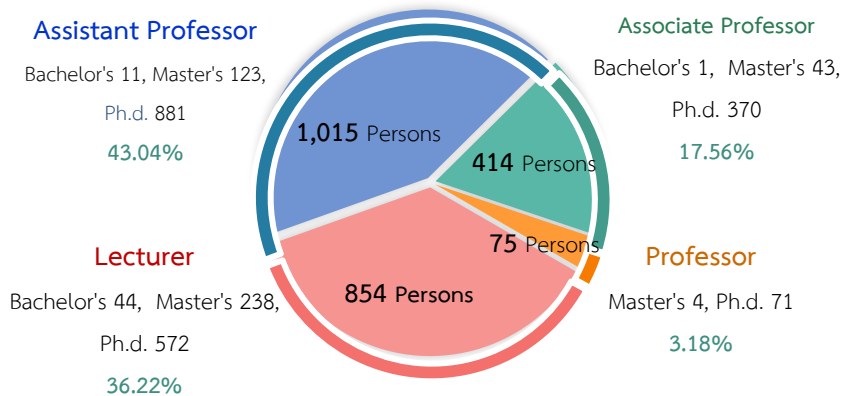
Personnel (By August 2020)

Type of Personnel



Academic Personnel (Lecturer) 2,358 Persons

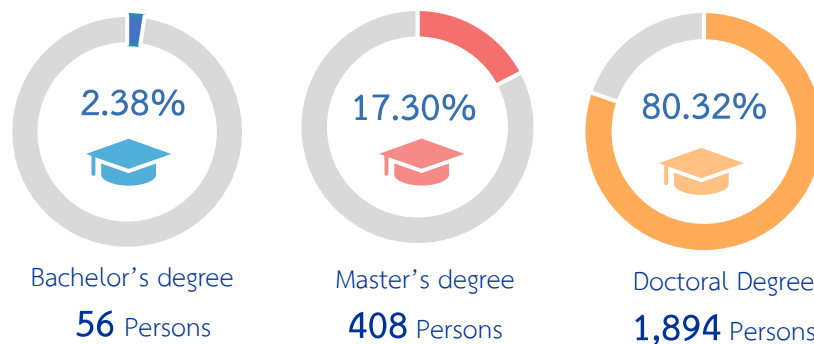
Classification by Academic Positions



Ratio of Lecturer per Student 1: 16

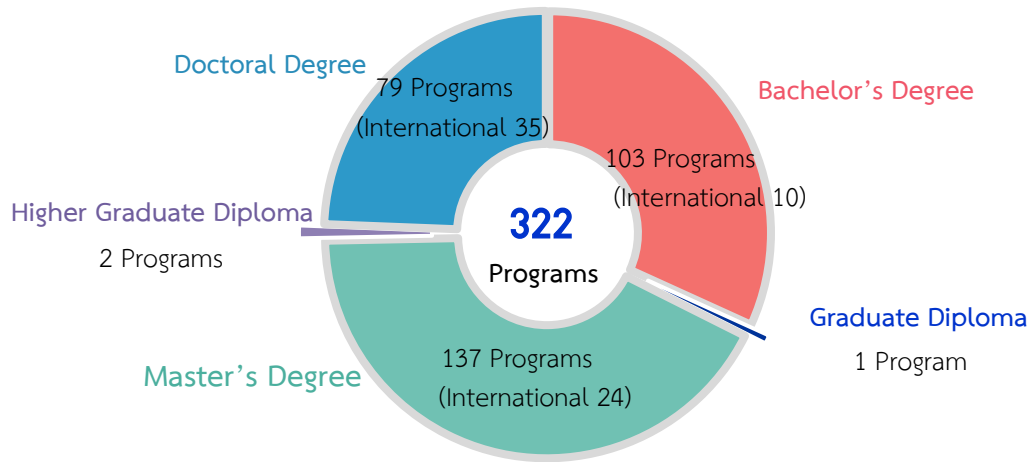


Classification by Degrees

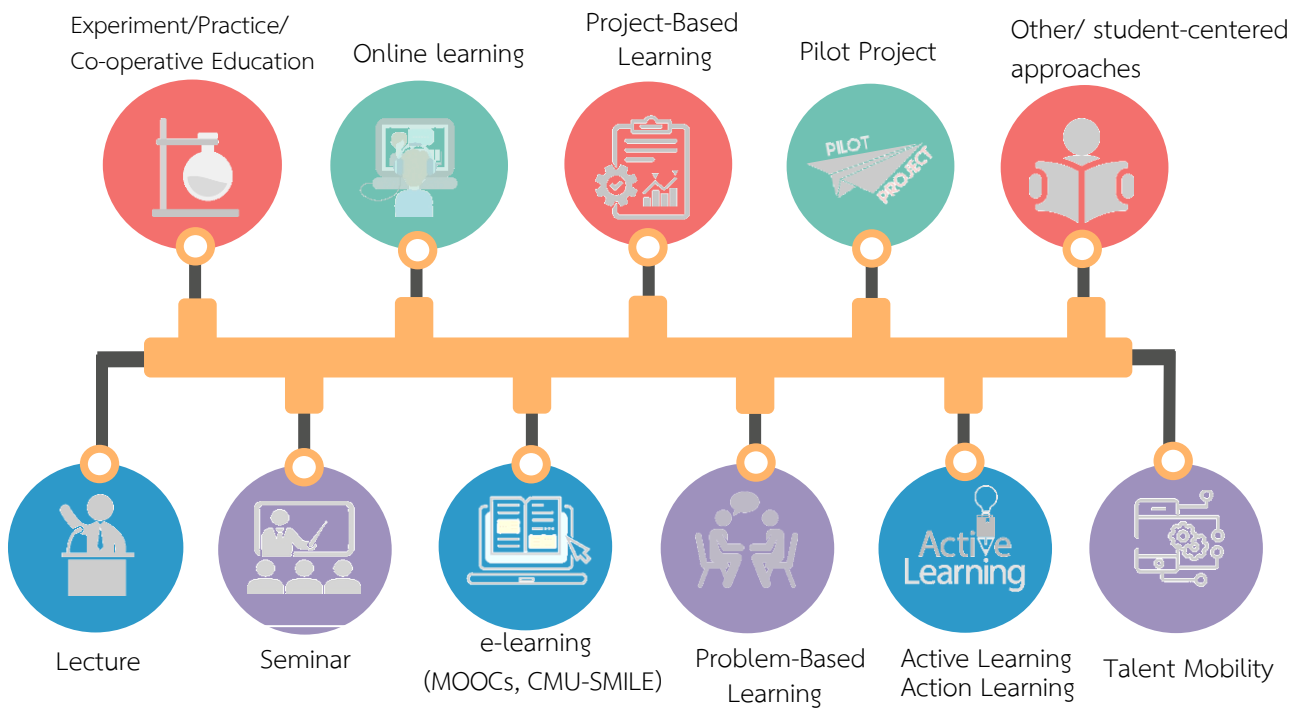


Graduate Production

Programs for Academic Year 2020



Types of Learning

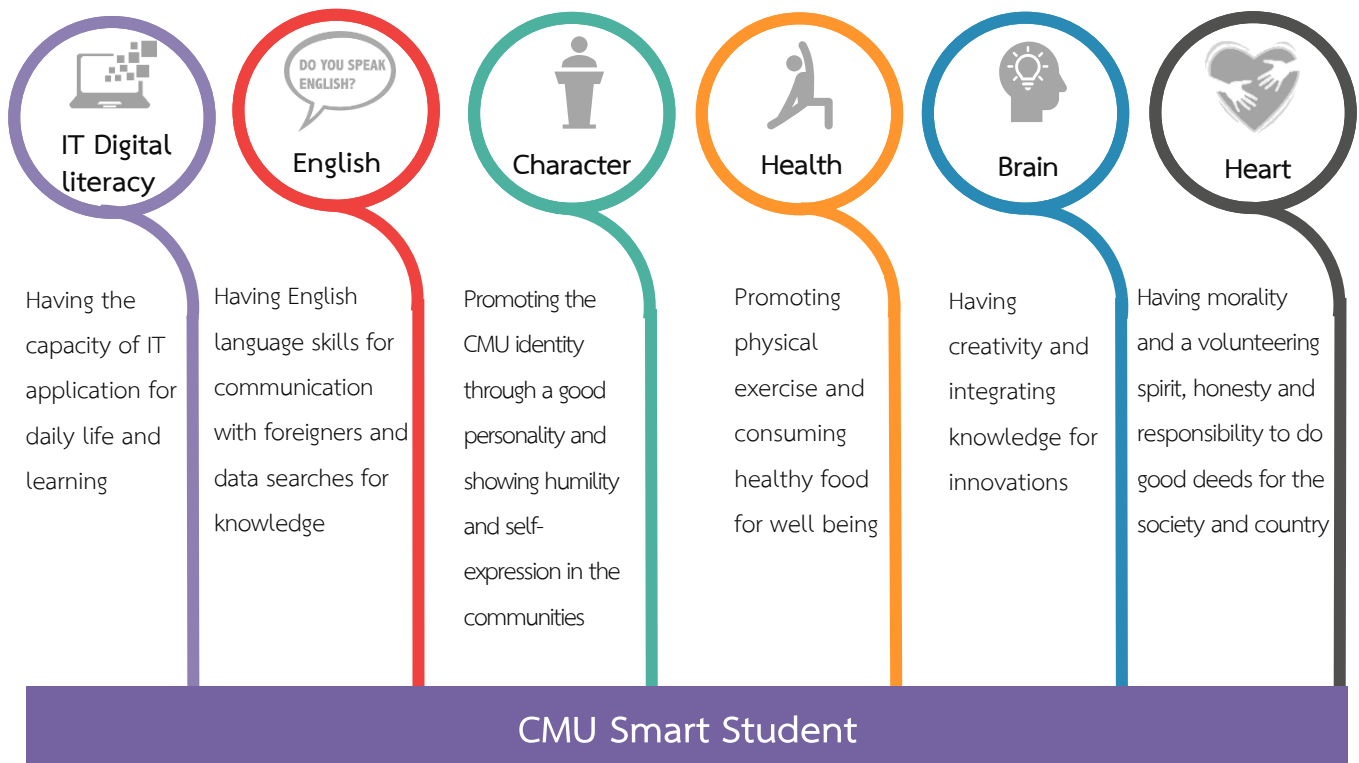


Student Admission

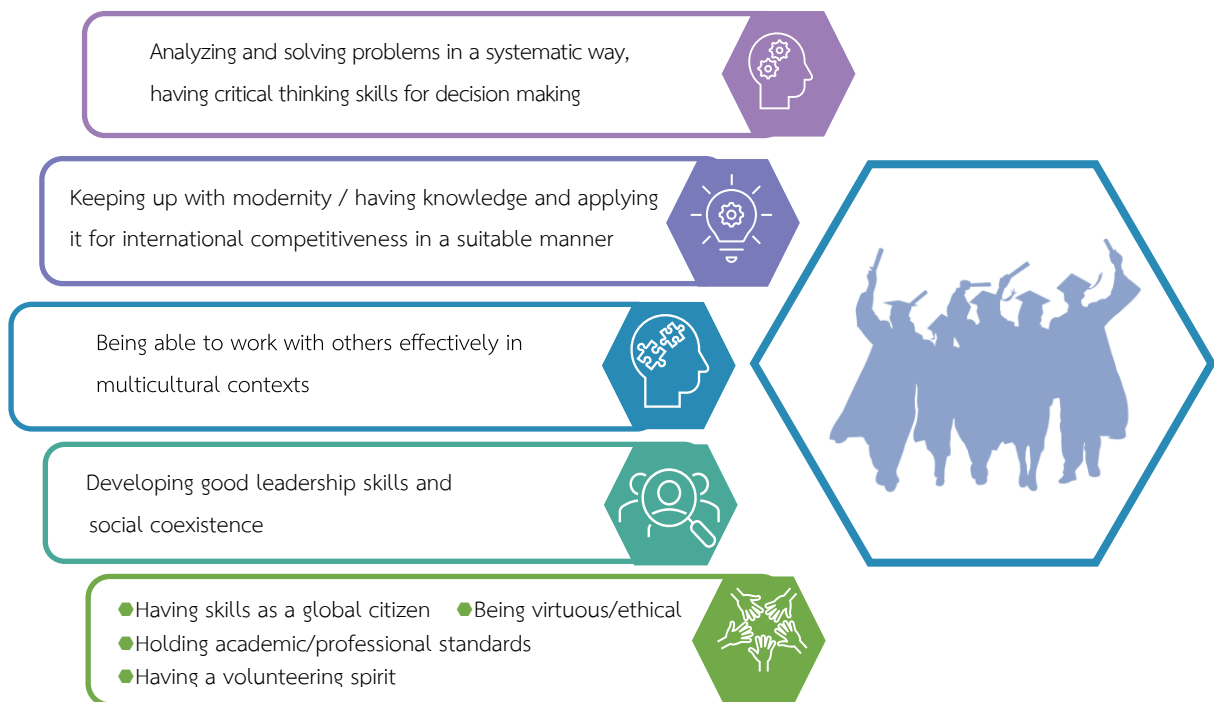
Student Admission by TCAS (Thai University Center Admission System)



Attributes of CMU Students: CMU Smart Student

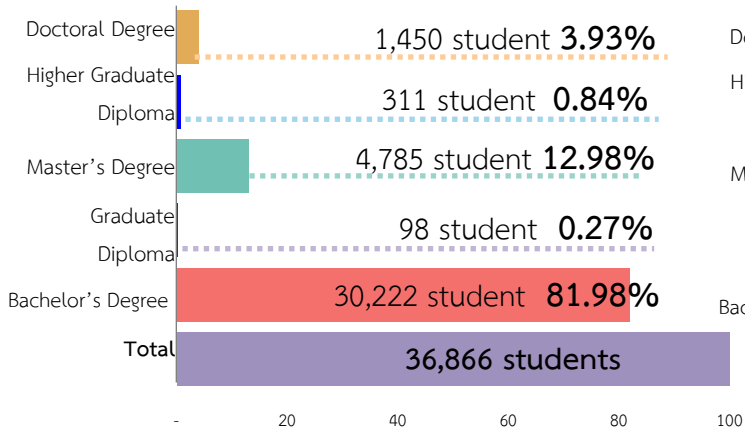


Attributes of CMU Graduates



Number of Students, Academic Year 2020 (2 July 2020)

Total Students

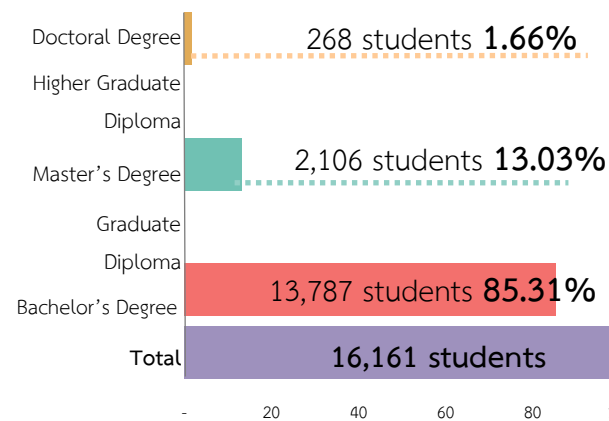


Student Ratio

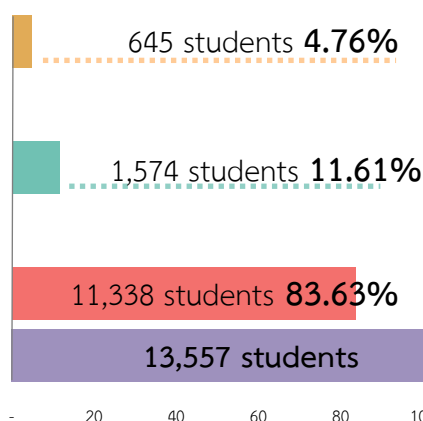


Number of Students Classified by Fields of Study

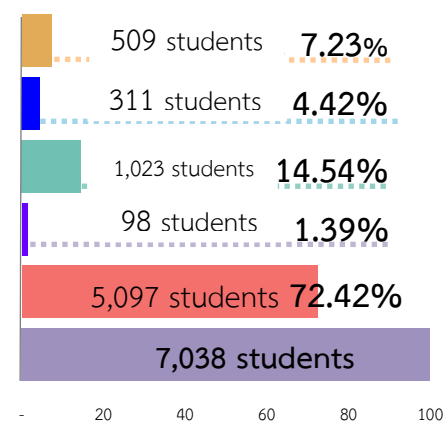
Humanities and Social Sciences



Science and Technology



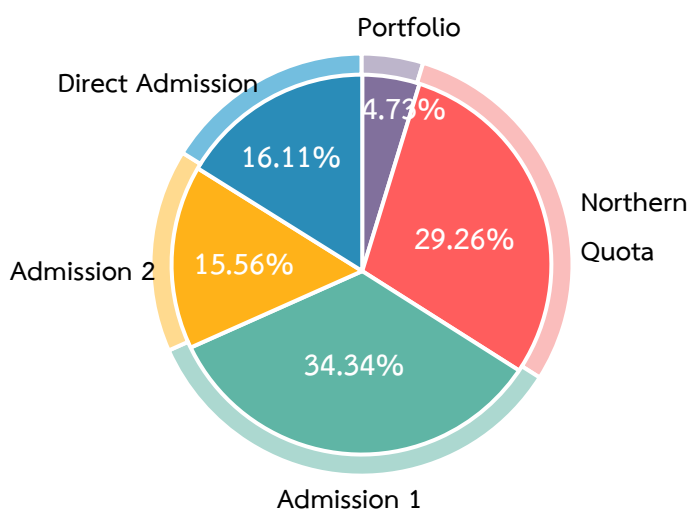
Health Science



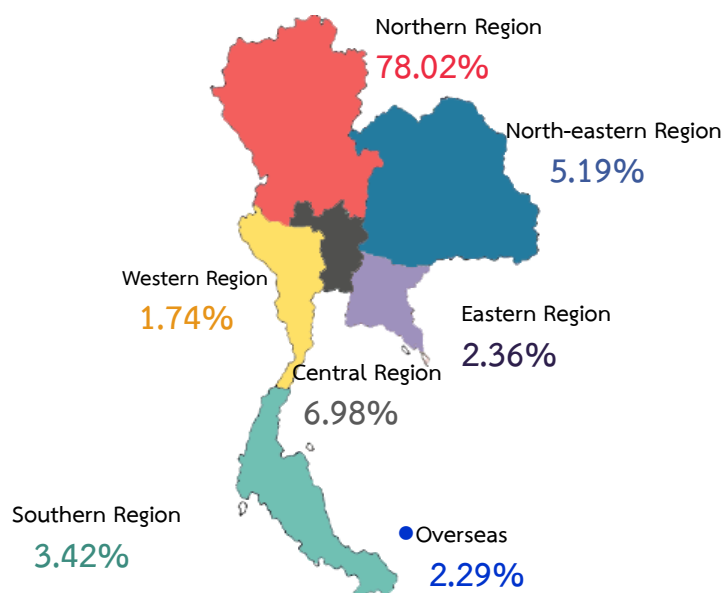
Multidisciplinary Field: Master's Degree : 82 students, Doctoral Degree : 28 students

New Students for Bachelor's Degree: 8,032

New Students Classified by TCAS Admission



Domicile of New Students



Tuition Fees

Average Tuition Fee per Semester, Bachelor's Degree



22,000-45,000 Baht

Faculty of Humanities
Faculty of Law
Faculty of Business Administration
Faculty of Engineering

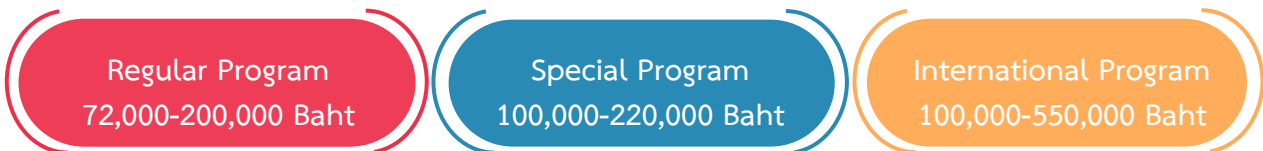
35,000-70,000 Baht

Faculty of Nursing, Faculty of Humanities (Thai Language as a Foreign Language), Faculty of Economics, Faculty of Social Sciences, Faculty of Architecture, College of Arts, Media and Technology (Software Engineering), International College of Digital Innovation, Faculty of Science (Environmental Science), Faculty of Engineering (Mechanical Engineering, Information Systems and Network Engineering)

Tuition Fee, Graduate Diploma Program (Full)

Faculty of Dentistry: 50,000-120,000 Baht

Tuition Fee, Master's Degree (Full)



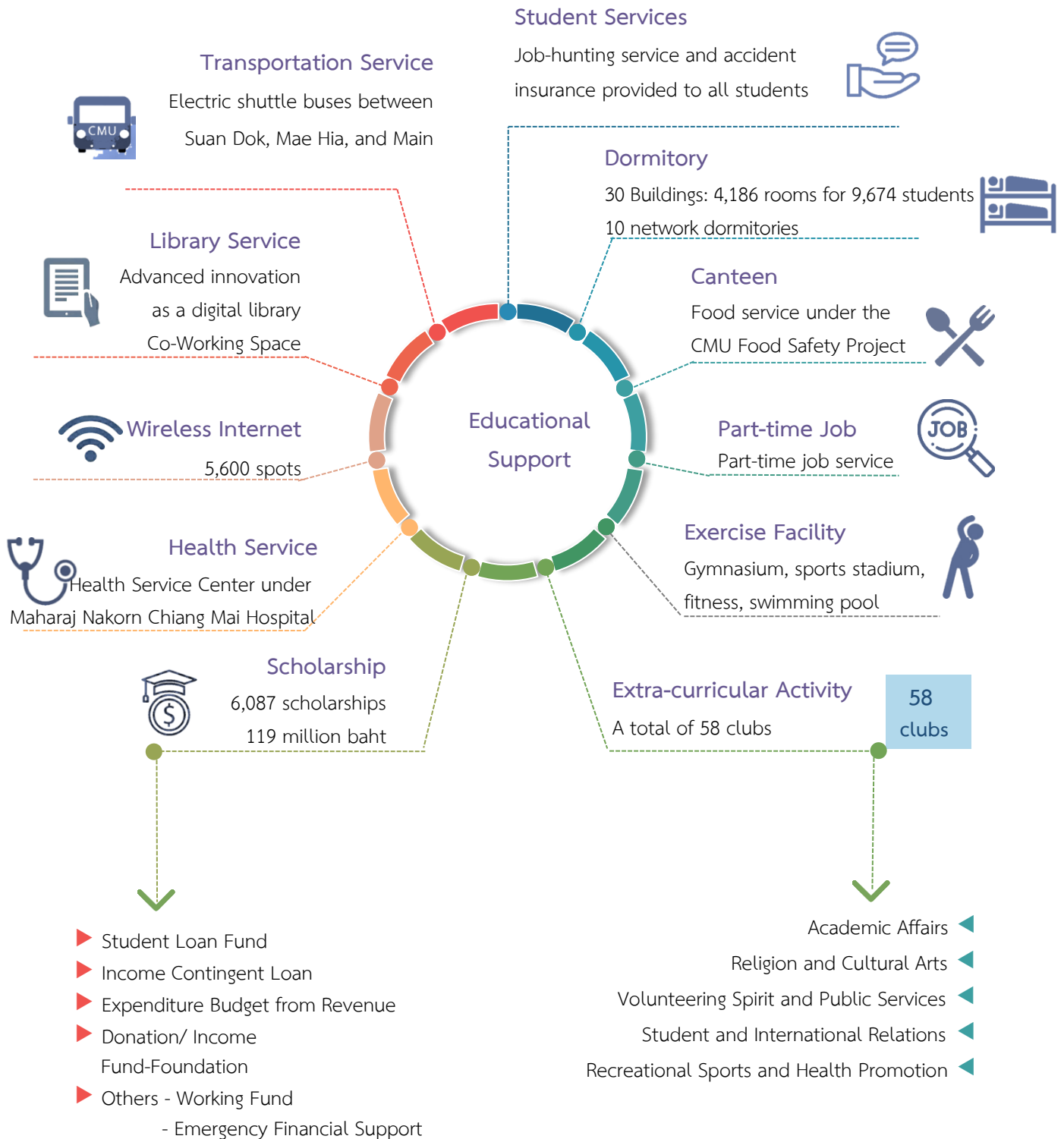
Tuition Fee, Higher Graduate Diploma Program



Tuition Fee, Doctoral Program (Full)

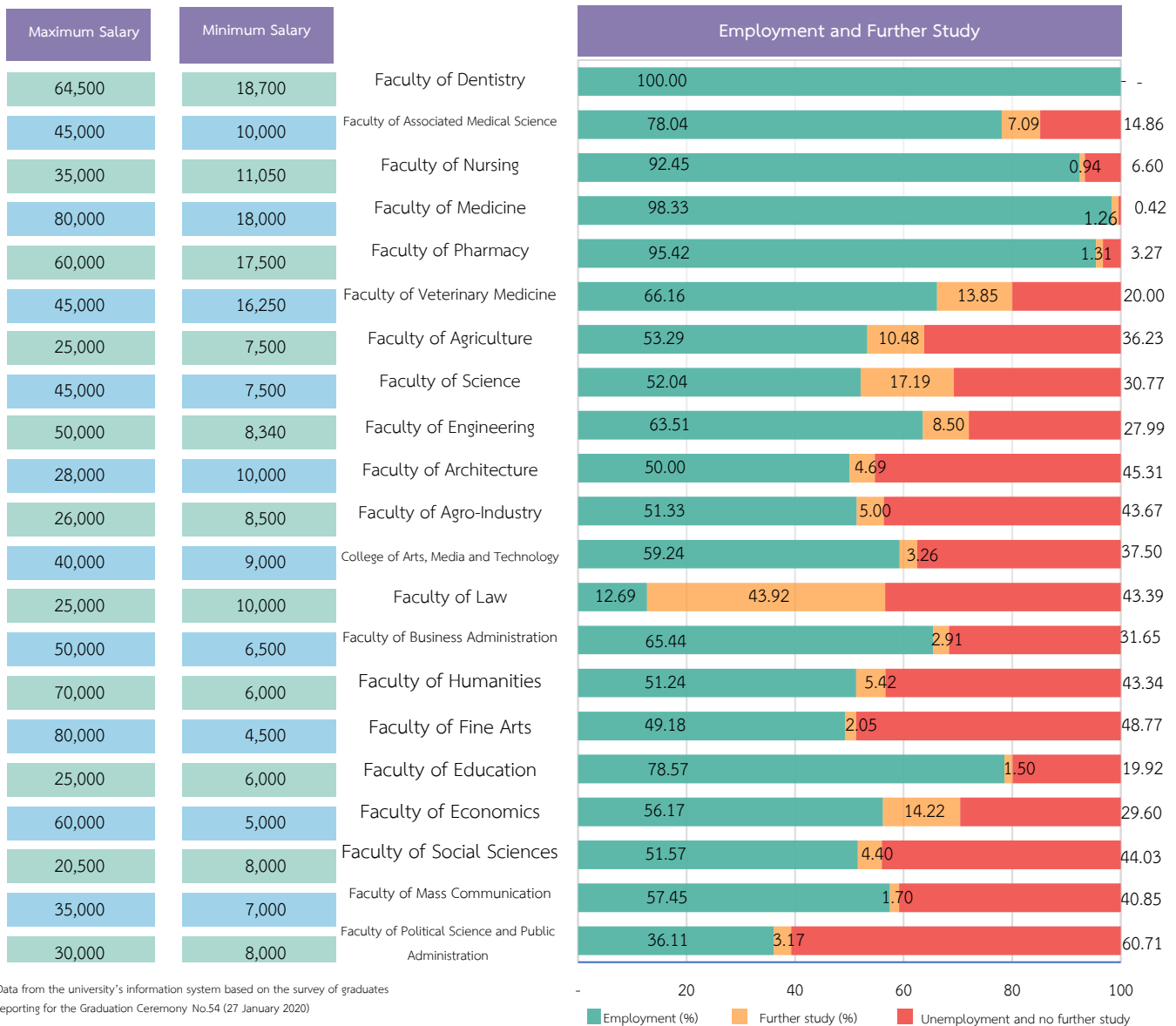


Educational Support

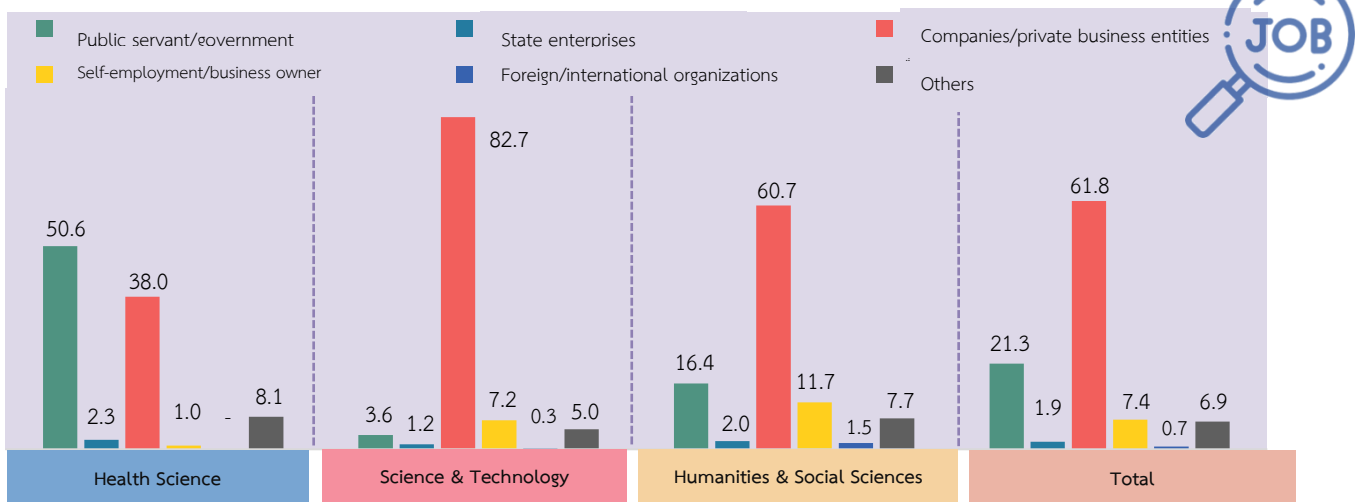


Graduation and Employment

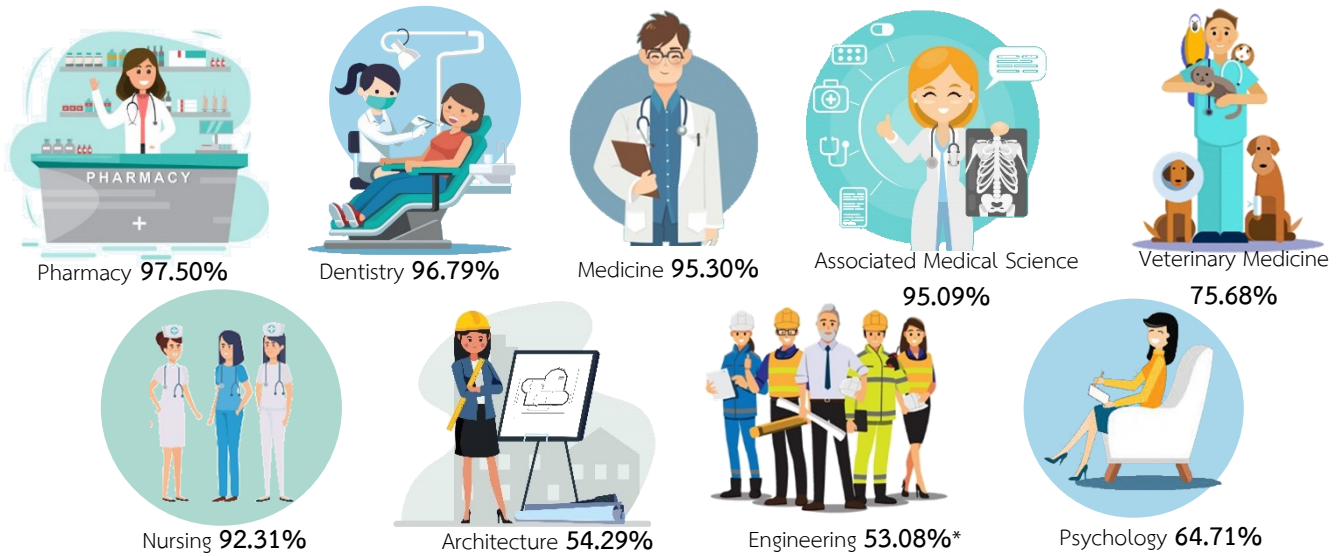
Percentage of Employment and Further Study, Income of Bachelor's Graduates (6 Months after Graduation)



Types of Agencies for Bachelor's Graduates (6 Months after Graduation)



Examination Results for License among Students (First Time) in 2020



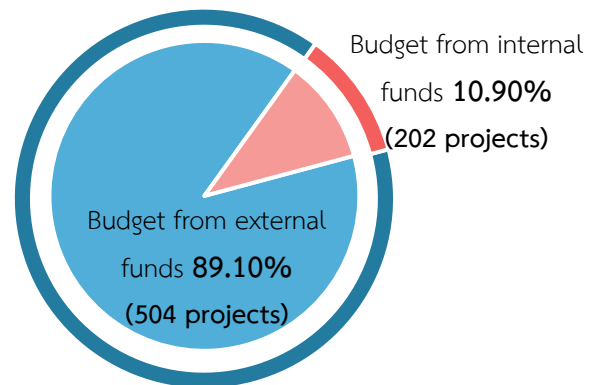
*Percentage of examinees who passed the general and specific exams in 2019

Research

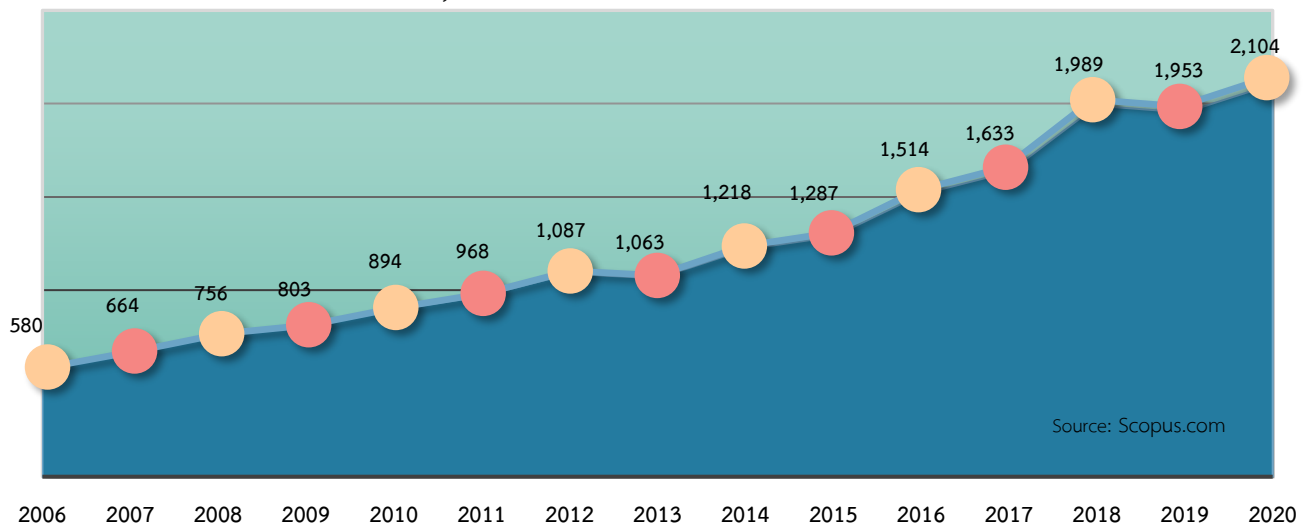
Policy/Research Fund

Chiang Mai University bases its direction of research development on research excellence and innovative creation that is practical toward the Thailand 4.0 Scheme and integrates research and study into the graduate program. Meanwhile, it still conducts research studies to serve society and to move forward the local areas through knowledge created by the university.

Research Budget 1,698 Million Baht



Number of Publications (by December 2020)





Environment and Energy Innovation

Renewable Energy

- Biogas System for Animal Farms
- Energy-saving Longan Dryer
- Gasifier
- City Gas Grid
- Energy-saving Steamer for Tea Leaves
- Carbon Credit Sales and Purchase
- Tanked CBG
- Bio-oil Fuel from Microalgae
- M Foods: Chicken Oven
- Energy from Organic Waste
- Haze Elimination Mobile
- MASPURAX for Wildfire Suppression
- Biogas Production from Maize Stems and Cassava
- Microbial Enhanced Oil Recovery
- CM Biogas Upgrading by Isolate Microorganisms CM1
- Prototype of High-temperature Heat Pump (80°C) for Animal Industrial Factories
- Real-time Smart Parking Sensor
- Technology Transfer Center for Compressed Biomethane Gas (CBG)
- Research Center for Quantum Technology

Industrial and Scientific Equipment

- Dust and Air Quality Monitor by Sensor and Laser for Real-Time Response
- Herbal Soap Production Machine and Glycerin Soap Base by Circulation System and Semi-Automatic Two-Way Blade
- Prototype of Rice Weevil Eradicator by Radio Frequency
- Weevil Eradicator by Radio Frequency (RF) for Communities
- Coffee Roasting After Burner
- Production of Silicon Carbide Nanofibers by Current Heating Technique
- Electrical Control System in Rooms for Hotels
- DustBoy for Haze Situation
- Silicon Photonics Device for Bio-substance Measurement
- Household Rice Mill Machine
- Sensor for Oil and Underground Mineral Exploration
- Atomic Magnetic Meter
- The First Photography of a Single Atom through CCD in Thailand
- High-flex Sensor



Food, Health and Elderly Care Innovation

Food and Beverages

- Goji Berry Essence with CoQ10
- Processed Local Food
- Black Sesame Extract "Sesamin"
- Golden Preserved Eggs
- Preparation of Powdered Fermented Rice Juice for Dietary Supplement Product
- LARD Product
- Parboiled Rice
- Mor Noi's Grass Herbal Candy for Smoking Cessation
- Longan Essence
- CMU Black Sticky Rice
- Miang...Traditional Fermented Tea
- Bioactive Compounds from Germinated Brown Rice for Nervous System and Brain Recovery
- Dried Pandan Leaves with Fragrance
- Black Garlic by Time Reduction
- MasterChef Umami Sauce
- Sweet Dipping Sauce 2 in 1: Low Sugar Recipe
- Ice Cream of Lanna Curry Noodles
- Anthocyanin-rich Extract of Leum Pua Rice Bran
- Chewable Collagen
- Carotenoids Extract from Raw Palm Oil for Cosmetics Product
- Citrus Seed Extract
- Dietary Supplements from Soy Germ Flour

Agricultural Technology

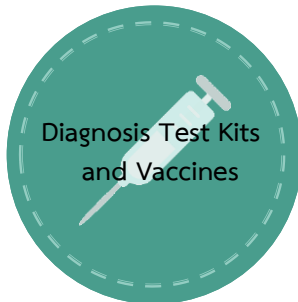
- Siam Tulip Development
- Packaging from Coffee Grounds and Cassava
- Extension of Fruit Shelf Life
- Nano Herb for Bee Diseases
- New Breed of Rice by Ion Technology
- Smart Bee
- A Prototyped Factory for Insect and Egg Eradication by Radio Frequency
- REMO: Innovation for Washing Chemicals in Vegetables
- Basic Programs for Land Snail Conservation
- Thailand's First Compact Ion Implanter for Improving Rice Varieties
- Prom Chulabhorn: A New Plant of the World
- The World's New Mushroom "Apsorn Mushroom"
- Innovative Food Fabrication Pilot Plant



Health Innovation



- Filaria DIAG Rapid Test Kit ●
- Solution Set for Osteoarthritis, Liver Disease and Cancer ●
- Alpha-thalassemia Test Kit ●
- Perception and Understanding Measurement Tool ●



- Hemoglobin E-thalassemia Carrier Test Kit ●
- Dengue Vaccine ●
- CMU Daily Health Passport ●
- CMU Daily Health Passport for COVID-19 ●



Brick Hot Pack ● Anesthetic Rice Gel ●

Rice Film for Oral Patch ●

Snore Reduction Device (2M2A) ●

Bioplastics for Medical Devices ●

Eye-shield for Eye-drops in the Elderly ●

Herbal-grain Hot Pack ●

Surada Rice Sponge for Bleeding Cessation ●

Spirulina Gel against Herpes Simplex Viruses ●

Aligner for Cleft Lip and Palate Patients ●

CMU EDTA Root Canal Irrigating Solution ●

Watchara Rice Bone: Biomaterials for Fixing Human Bones ●

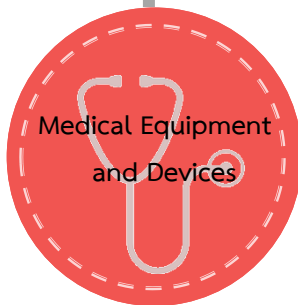
3-Axis Ankle Physical Therapy Device ●

3D Printing Technology for Medical Industry and Bioplastics ●

Customized Nasal Stent ●

UVC Virus Killer ● CMU AIYARA ROBOT ●

CMUgency ●



● CMU Protocol for Root Canal Irrigation

● Postoperative Urinary Aids

● CMU EndoRay for Radiation Photography

● Nasoform

● Removable Mini Implant for Fixing Teeth

● Siri Artificial Bone from Cockle Shell

● Converting Machine for Digitalized

Harris Footprint of Pressure Patterns

● Biodegradable: Development of Catalyst for Medical Bioplastics Production and Biodegradable Packages

● Mandibular Movement Device by Magnets

● Air Decubitus Inflatable Bed Equipment

● Compact Cool Plasm Jet: Plasma Technology of Cool Air for Treatment of Pressure Ulcers

● Robotic-aided Hand Physical Therapy



Whitening Substance from Chitosan ●

Nano-cosmeceuticals from Marigold Flower Extract ●

Herbal Utilization for Healthy Food and Cosmetics: *Makiang* ●

Extraction of Essential Oil and Fragrance from ●

Thai Herbs and Flowers

Anti-aging Cosmetics from Red Rice Extracts ●



● Nano-emulsion Mixed with Aromatic Herbs for Whitening Skin

● Crocodile Blood Extract for Cosmetics and Dietary Supplement Products

● Nano-oryza Cosmeceuticals for Skin Wrinkle Reduction and Hair Loss Prevention from Thai Rice

● Anti-aging Cosmetics from Yellow Flower Extracts



Social Services/Roles

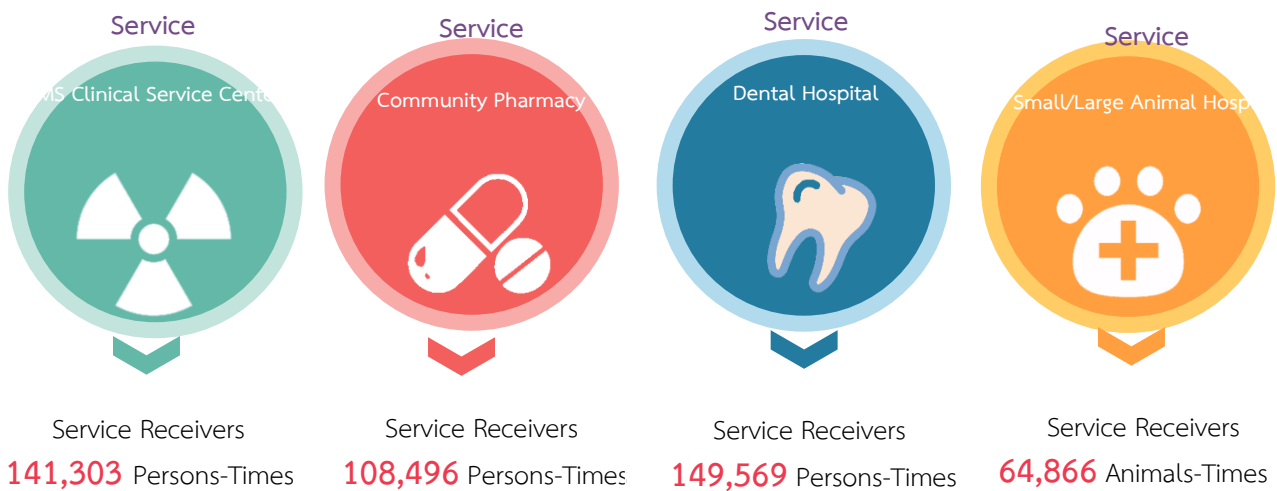
Academic Service

Chiang Mai University has carried out a variety of academic services in response to the needs of the society and communities along with knowledge transfer projects/activities and professional services for social benefits through its academic strengths and potential. These include the projects of renewable and alternative energy, academic services for solving crises in the northern communities, and operations in accordance with the royal initiative projects. The University has undertaken these following projects:

- Behavioral Adjustment Project for Risk Reduction of Coronary Artery Disease and Heart Disease
- Craniofacial Center, The Information Technology Foundation under the Initiative of Her Royal Highness Princess Maha Chakri Sirindhorn Faculty of Medicine, Chiang Mai University
- Plant Genetic Conservation Project under the Royal Initiatives of Her Royal Highness Princess Maha Chakri Sirindhorn
- Agriculture and Bio Plasma Technology Center (ABPlas)
- Economic Forest Plantation for Haze Free
- CMU Climate Change Data Center (CCDC)
- Law for Community
- Elderly Health Promotion
- Community-based Rehabilitation Center
- Smart City for Aging Tourism
- Chiang Mai towards the World Heritage
- Energy-saving Steamer for Tea Leaves
- Circular Waste Management Training Project
- Promotion for Non-toxic Crop Production
- Occupational Development for Chiang Mai People (Eri Silk, Cash Crops)
- Income Generation Plan for the Elderly and the Disadvantaged
- Conservation and Utilization of Rice Genetic Varieties in Mae Chaem District of Chiang Mai
- Moving the Income Generation Plan for the Elderly and the Disadvantaged on Public Space : A Case of Ban Dong Slow Life Learning Center, Ban Pao Sub-district, Mae Taeng District, Chiang Mai



Medical Care, Maharaj Nakorn Chiang Mai Hospital, Sriphat Medical Center, and the Center for Medical Excellence, Chiang Mai University



The Royal Initiative Projects of HRH Princess Maha Chakri Sirindhorn in Omkoi Areas of Chiang Mai

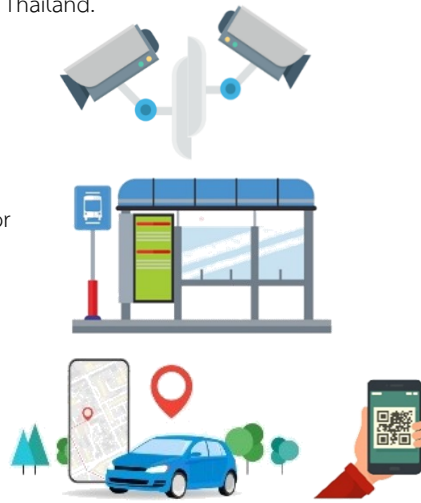


Chiang Mai Smart City Project, “Smart Nimman”

Chiang Mai University has carried out the Smart Nimman Project in conjunction with Chiang Mai Province as a part of the Smart City Project to accord with the National Strategy on application of digital technologies for better life quality and promotion of both economic and social development in all regions of Thailand.

Smart Nimman

- Installation of CCTV
- Installation of Smart Sensor
- Park and Ride
- Shared Parking
- Online Booking
- Online Payment



Environment and Energy

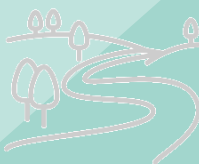


Promoting the installation of solar-cell systems for electricity generation.



- Promoting biogas for a large-scale farm and poultry farm through collaborations of Ministry of Energy, which converts waste into biogas not less than 9.97 million cubic meters/year.
- Integrated Biomass Management Center

Developing the database center through internet networks for promoting the management of water resources in Chiang Mai.



Installing the center for real-time monitoring of the particulate matter concentration (PM 2.5, PM10) to detect the air quality in Chiang Mai and report it through the online system to make it possible for quick access by the public.



Social Accountability



- Economic Forest Plantation for Haze Free
- Haze Free Network in the Upper ASEAN
- Solving Wildfire and Haze in Chiang Mai City (Chom Thong Model)
- Green Area Rehabilitation (Mae Chaem Model)
- Invention Development for Haze Surveillance

- Pre-school Child Project by Family and Community
- Youth Development Project
- Health Promotion for Karen Communities in Omkoi District

- Project for Conservation and Utilization of Plant Varieties for High Land Rice Cultivation
- Project for Chemical Reduction in Agriculture by Farmers
- Community Engagement for Safe Food Production

- Capacity Enhancement of Holistic Care to the Elderly
- Income Generation Plans for the Elderly, People with Disabilities, and the Disadvantaged

- Water Quality Improvement for Consumption in Schools and Communities
- Community Forest Conservation
- School Waste Management
- Integrated Solid Waste Management Center, Chiang Mai University

International Cooperation

International Cooperation between Chiang Mai University and Universities/Institutes Abroad



Preservation of Arts and Culture

Chiang Mai University actively leads and takes part in nurturing, preserving and promoting the local arts and culture through its focuses on the proactive strategy of Creative Lanna below.

Center of Lanna Folk Wisdom and Knowledge

- Northern Thai Information Center, CMU Library, Chiang Mai University
- Preservation and Maintenance of Lanna Traditions
- The Lanna Traditional House Museum, The Center for the Promotion of Arts and Culture, Chiang Mai University
- Lanna Architecture Center, Khum Chao Burirat (Maha In Na Chiang Mai)



Adding Values to Lanna Folk Wisdom

- Wat Sri Nawarat (Thung Sieo): Community Arts
- Krathong Parade, Chiang Mai University
- Lanna Architecture Center as a center for architectural preservation for the city and community and continuation of Lanna architecture
- Pilot Project for Folk Wisdom Continuation and Value Addition to Pottery of Ban Muang Kung: Local Handicrafts to Creative Hand-made Products
- Art & Design Contest Lanna Contemporary 2020

Returning to the Society and Community

- Lanna Essence Workshop
- Creative Lanna League
- Gastronomy Tourism (Lanna High Tea), The Center for the Promotion of Arts and Culture, Chiang Mai University



Roles of Chiang Mai University toward the Situation of COVID-19

Mitigation of the Situation of COVID-19



For students

- Reduction** ▶ Tuition Fee/Dormitory Expenditure
- Mitigation** ▶ Student Loan Fund, Postponement of Tuition Fees/ Dormitory Expenditure/ Living Expenses
- Offer for free** ▶ Student Scholarships



For the society

- Media Creation for Knowledge Dissemination and Hotline Center
- Personal Protective Equipment (PPE)
- Prevention Box for Infectious Disease Transmission
- Negative Pressure Room for Infected Patients
- Robots for Medicine and Food Delivery
- Nano Mask Production
- Design and Production of Face Shields
- Treatment of Acute Infection
- Swab Guard for Coughing Patients
- Giving Hygienic Masks and Alcohol Gel



For the community

Building the Innovative Food Fabrication Pilot Plant to process excessive agricultural produce and generate employment by purchasing mangoes from affected farmers in a total of 5,000 kilograms.



Innovation for Solving Covid-19

Self-screening Application: This application is used for self-screening and supports the information in Thai, English and Chinese. It aims for self-health checks, allowing visitors to fill in their everyday information for a 14-day period. If any symptoms meet the criteria, a warning will be instantly sent through SMS and emailed to the responsible agencies.

CMC-19 Application (Chiang Mai Covid-19 Information system): This application helps manage the information of patients possibly infected with Covid-19 and Covid-19 patients. The application can also manage the relevant information and allocate resources among the networked hospitals in Chiang Mai to provide real-time reports so that all responsible organizations are notified and can deal with patients promptly.

CMU Aiyara Robot is designed to minimize the direct exposure to patients. It functions as a medical and nursing assistant for delivery of food and medicine, including talking with a patient and temperature checking.

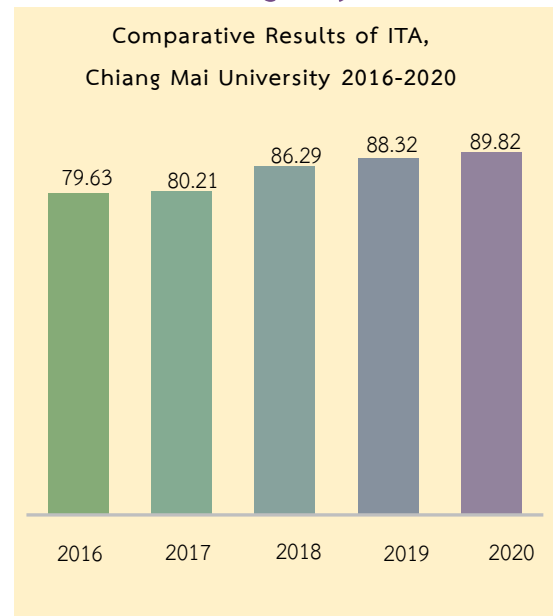
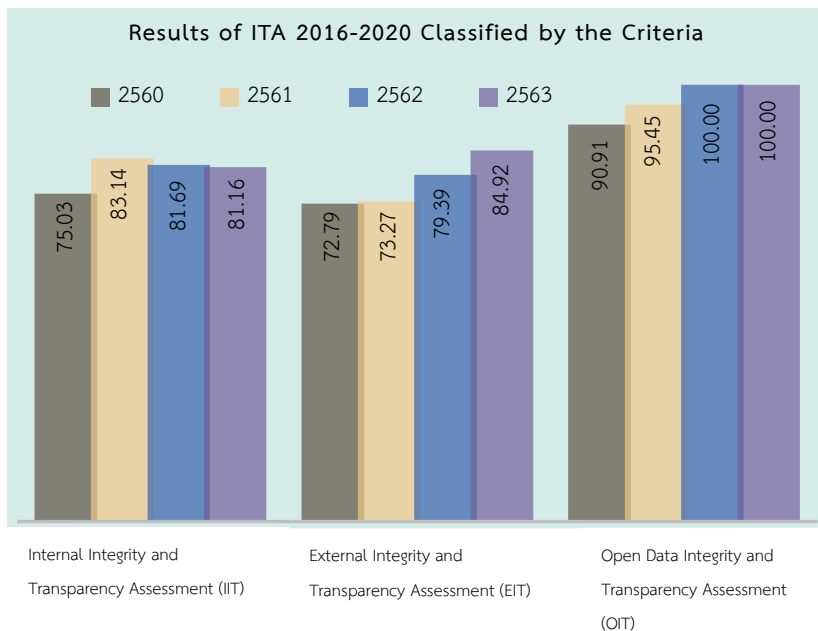
BMEi CMU & Face Shield BMEi Face Mask Enhancer: The development of this equipment for preventing transmission of the infectious agent from patients can be effectively reused by adjusting its sizes to fit the head of each person. It is additionally developed to enhance a face mask for more effective prevention, including PM 2.5.









Good Governance of the University



Integrity and Transparency Assessment (ITA) of the Government Agency



The University's Channels for Contact, Information, and News

 www.cmu.ac.th
 [cmuofficial.ig](https://www.instagram.com/cmuofficial)
 [cmuchannel.cmu.ac.th](https://www.youtube.com/channel/UCmu)
 [Cmuofficial](https://www.facebook.com/Cmuofficial)
 [prcmu239](https://www.youtube.com/channel/UCprcmu239)
 [@cmuthailand](https://line.me/tv/@cmuthailand)



Planning Division, Office of the University,
Chiang Mai University
239 Huay Kaew Road, Suthep Sub-district,
Mueang District, Chiang Mai 50200
Tel: 053-943141-55 Fax: 053-941147